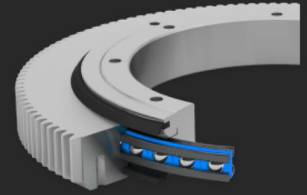


Wire Race Bearings LVD Series

Steel Bearing assembly with external gear Type LVD



FHD LVD bearing assemblies with external gear offer high load capacity and are suitable for medium-high speeds.

Description

FHD bearing assemblies type LVD are ready to install bearing assemblies with external gear, steel housing rings and integrated bearing elements. FHD bearing assemblies type LVD are suitable for medium rotational speeds and accuracies. They can be supplied at short notice, in some cases even from stock. Designed as 4-point bearings, they can support equally high loads from all directions and are insensitive to shocks and vibrations. The bearing elements are sealed on both sides and adjusted to preload.

Properties

Smooth running	● ● ●
Resilience	● ● ● ●
Speed	● ● ● ●
Stiffness	● ● ●
Weight	● ● ●
Price	● ● ●

Technical data

Material

Outer ring: 42CrMo4V

Inner ring: C45N

Ball race rings: hardened and tempered chrome-silicon steel

Rolling element: hardened rolling bearing steel

Cage: polyamide or thermoplastic polyurethane

Sealing: NBR

Gearing

DIN 3967, quality 8e25, straight toothed, module see table below

Operating temperature

-20 °C to +80 °C, short-term up to +100 °C

Peripheral speed

Max. 5 m/s, without seal max. 10 m/s

Lubricant

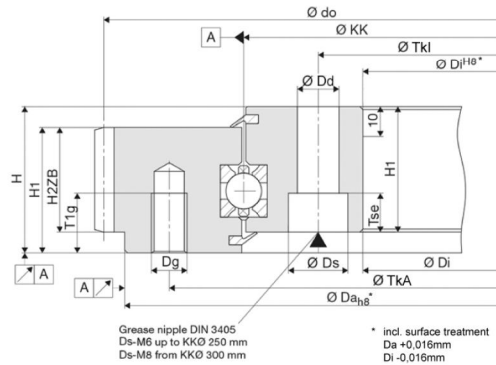
Shell Gadus S3 V220 C2

Relubrication

Via grease nipples to DIN 3405

Steel Bearing assembly with external gear Type LVD

Data tables



LVD Table part 1

Name	KKØ mm	Dimensions mm													Attachment per ring
		Ds	Dd	H	H1	H2ZB	Dg	Tse	T1g	Da _{h8}	Di ^{h8}	TkA	Tkl	do	
LVD-0100	100	11	6,6	34 ^{+/-0,4}	27	22	M 6	6,8	10	150	50	135	65	160	6x
LVD-0150	150	11	6,6	34 ^{+/-0,4}	27	22	M 6	6,8	10	200	100	185	115	210	6x
LVD-0200	200	11	6,6	34 ^{+/-0,4}	27	22	M 6	6,8	10	250	150	235	165	260	8x
LVD-0250	250	11	6,6	34 ^{+/-0,4}	27	22	M 6	6,8	10	300	200	285	215	320	10x
LVD-0300	300	15	9,0	38 ^{+/-0,4}	31	26	M 8	9,0	15	360	240	340	260	372	12x
LVD-0350	350	15	9,0	38 ^{+/-0,4}	31	26	M 8	9,0	15	410	290	390	310	423	14x
LVD-0400	400	18	11,0	44 ^{+/-0,5}	37	32	M 10	11,0	15	470	330	445	355	483	14x
LVD-0450	450	18	11,0	44 ^{+/-0,5}	37	32	M 10	11,0	15	520	380	495	405	534	14x
LVD-0500	500	20	14,0	49 ^{+/-0,5}	42	35	M 12	13,0	20	580	420	550	450	594	14x
LVD-0600	600	20	14,0	49 ^{+/-0,5}	42	35	M 12	13,0	20	680	520	650	550	693	16x
LVD-0700	700	20	14,0	53 ^{+/-0,5}	45	38	M 12	13,0	20	790	610	750	650	808	22x
LVD-0800	800	20	14,0	53 ^{+/-0,5}	45	38	M 12	13,0	20	890	710	850	750	920	24x
LVD-0900	900	20	14,0	53 ^{+/-0,5}	45	38	M 12	13,0	20	990	810	950	850	1020	24x
LVD-1000	1000	20	14,0	53 ^{+/-0,5}	45	38	M 12	13,0	20	1090	910	1050	950	1120	26x
LVD-1200	1200	26	18,0	60 ^{+/-0,5}	52	44	M 16	17,5	25	1300	1100	1265	1135	1320	30x
LVD-1400	1400	26	18,0	60 ^{+/-0,5}	52	44	M 16	17,5	25	1500	1300	1465	1335	1520	36x
LVD-1600	1600	26	18,0	90 ^{+/-0,5}	82	69	M 16	17,5	25	1730	1470	1685	1515	1752	42x
LVD-1800	1800	26	18,0	90 ^{+/-0,5}	82	69	M 16	17,5	25	1930	1670	1885	1715	1956	46x

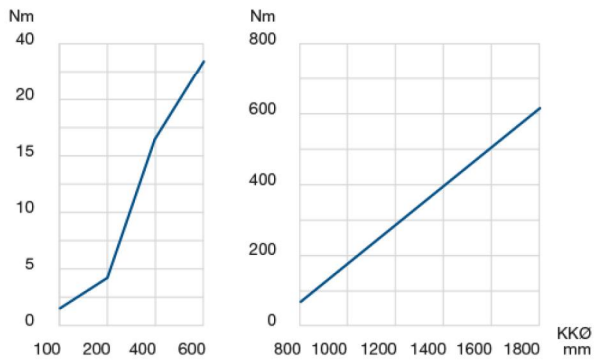
Steel Bearing assembly
with external gear
Type LVD

LVD Table part 2

Name	KKØ mm	Load ratings kN				Stat. M. kNm	Gearing		Weight kg	Order no.
		C _{0a}	C _{0r}	C _a	C _r		C _{0m}	Module m		
LVD-0100	100	54	25	18	15	1	2	80	3,4	97186A
LVD-0150	150	82	39	21	18	3	2	105	5,0	97187A
LVD-0200	200	110	52	23	20	5	2	130	6,7	94119A
LVD-0250	250	138	65	25	22	8	2	160	8,4	97189A
LVD-0300	300	168	79	27	24	12	3	124	14,1	94120A
LVD-0350	350	196	92	29	25	16	3	141	16,5	97191A
LVD-0400	400	419	197	51	44	39	3	161	26,0	94121A
LVD-0450	450	477	225	54	47	51	3	178	29,2	97193A
LVD-0500	500	530	250	56	49	62	3	198	42,4	94117A
LVD-0600	600	636	299	60	52	90	3	231	50,8	94118A
LVD-0700	700	742	349	64	55	122	4	202	73,0	97196A
LVD-0800	800	848	399	67	58	160	5	184	83,2	97197A
LVD-0900	900	954	449	70	60	202	5	204	93,6	97198A
LVD-1000	1000	1065	501	73	63	251	5	224	104,0	97199A
LVD-1200	1200	1677	789	94	81	473	5	264	158,5	97200A
LVD-1400	1400	1956	920	99	86	644	5	304	184,9	97201A
LVD-1600	1600	1984	933	140	121	747	6	292	430,8	97202A
LVD-1800	1800	2234	1050	146	126	946	6	326	484,2	97203A

Steel Bearing assembly with external gear Type LVD

Rotational resistance



Radial and axial runout accuracy

